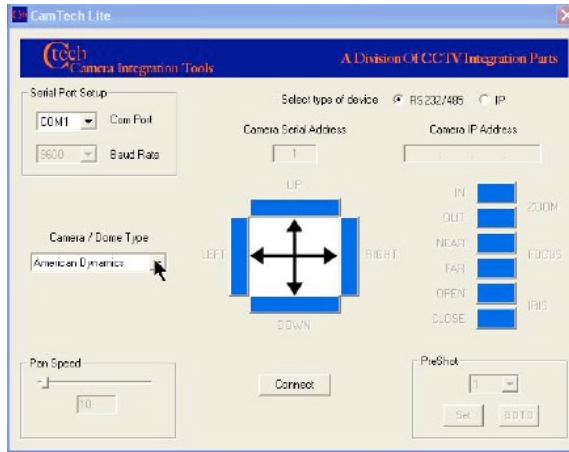


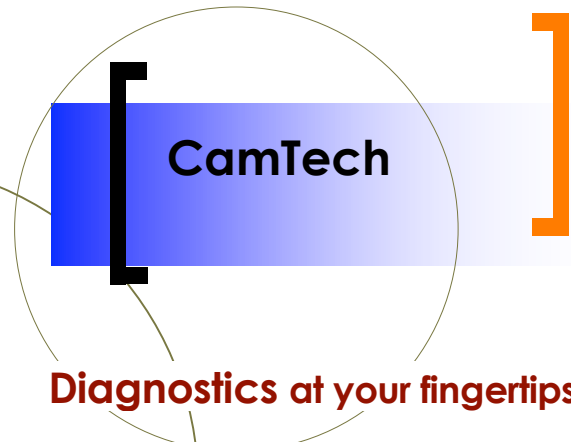
CAMTECH
380 HARGRAVE ST
INGLEWOOD, CA. 90302
USA
 Address Correction Required

CAMTECH DIAGNOSTIC TOOLS



Using a keyboard or mouse click, the **Life or Pro Software** commands your Pan/Tilt effortlessly.

We were asked the other day, "Why didn't anyone think of this before? It makes so much sense". Well, the solution is here now, and we hope you are able to use and appreciate what it



Diagnostics at your fingertips

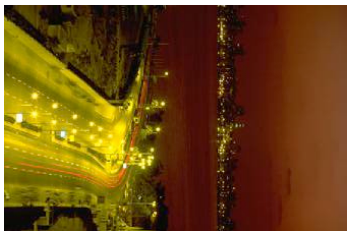
Designed-by and built-for those who must labor at remote sites.

An integrator's best friend!

Very simply stated CamTech is a diagnostic tool which enables you to monitor and insert 'command' data into your system communications paths for diagnostic control and to verify the usability thereof. It is a diagnostic tool for the installation and upkeep of CCTV Pan/Tilt/Zoom data communications typical of modern large integrated systems.

www.camtechtester.com

CAMTECH
 380 Hargrave St
 Inglewood, Ca. 90302
 USA
 Phone: 1-310-672-3033
 Fax: 1-310-672-3033
 Email: camtech@pacbell.net



*It is an avenue
 towards peace of
 mind.*



CAMERA INTEGRATION TOOLS



CAM TECH LITE

CAM TECH PRO

CamTech software and the hardware Kits work hand-in-hand to analyze and diagnose existing TX / RX data. The Troubleshooting Kit allows you to tap into your system and insert 'realtime' command data for diagnostic control and immediate readouts. Our hardware kits provide solutions to any of your connection problems.

CamTech provides up to 9 protocols compatible with products from American Dynamics, Cohu, Diamond, Javelin, Kalatel, Pelco, VCL and Vicon. Other protocol may be added to this list as future needs dictate.



**WE CAN BRIDGE OVER
YOUR PROBLEMS-----
WITH OUR SOLUTIONS.**

- ✿ Operate from a laptop loaded with Windows 98, 2000, NT or XT
- ✿ Supports standard Pan / Tilt / Lens commands
- ✿ Supports variable speed pan/tilt commands
- ✿ Supports SET & GO preshot commands
- ✿ Provides and displays communications in RS-232, 422, 485 data formats with variable baud rates.
- ✿ Provides real-time on screen data commands
- ✿ Confirms signal transmission and returning 'handshake' signal
- ✿ Confirms and offers visual assurances of real time operation of attached system hardware.
- ✿ Built-In "HELP" functions

CAM TECH CT-KT-01

- ✿ Troubleshooting kit provides an interface with most camera connections.
- ✿ Operates with any laptop (old or new) computer.
- ✿ RS232 / 485 conversion kit
- ✿ Simple to connect and easy to understand diagnostics
- ✿ Simple connections using our unique **QuickConnect** system.

Information Request Form

Select The Type of Information You Want

Product Literature:

- Lite/Pro Software
- Troubleshooting Kit
- Accessories

Demo Disk:

- Lite Version
- Pro Version

Call From CamTech:

- Have Your Product
- Application Question
- Sales Call

Want to Sell Your Product:

- Dealer Level
- OEM Level

Comments:

Name _____

Address _____

Phone Number _____

Cell Number _____

CAMTECH

380 Hargrave St
Inglewood, Ca. 90302
USA
Phone: 1-310-672-3033
Fax: 1-310-672-3033
Email: camtech@pacbell.net

To Return ✂